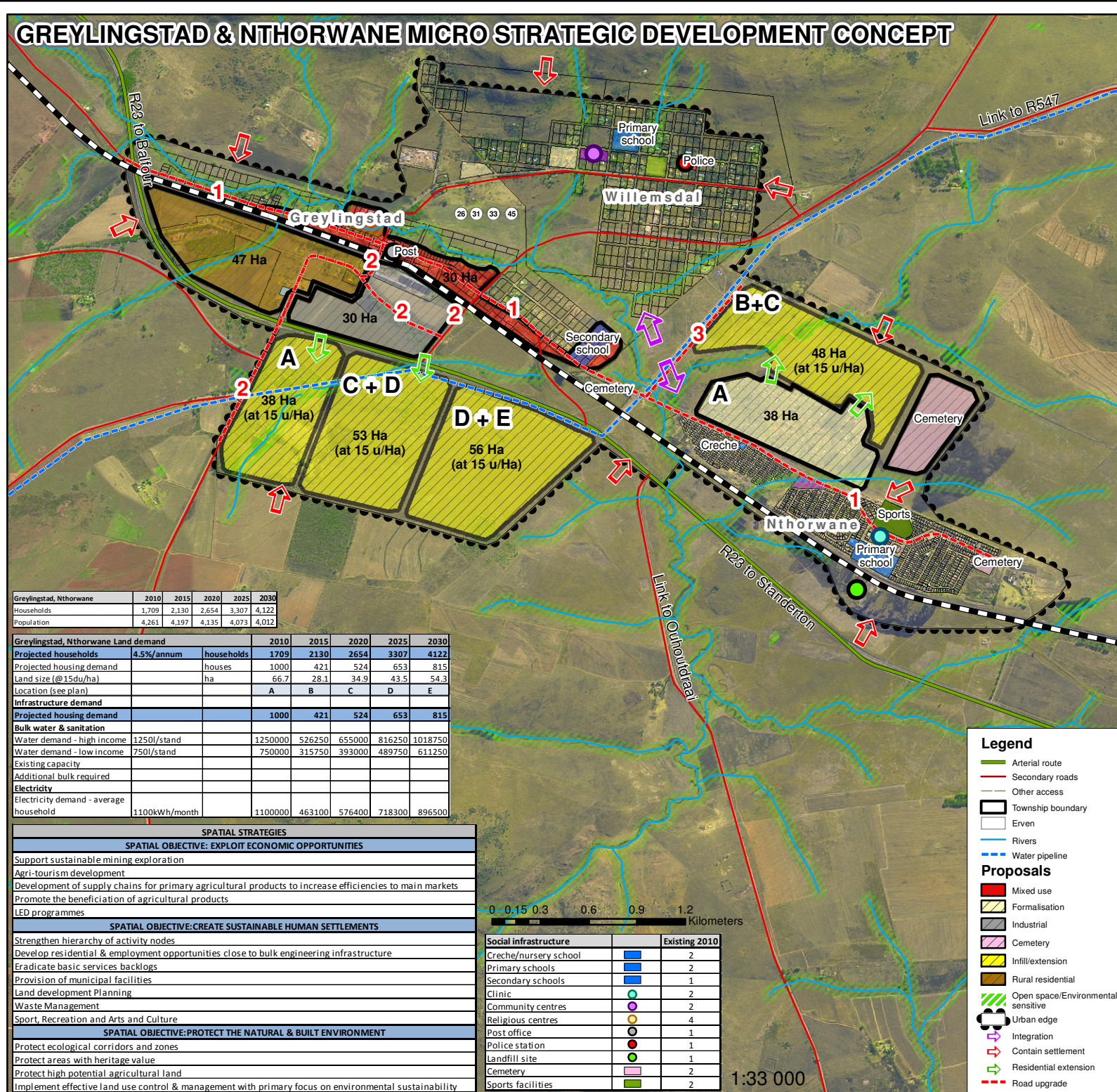
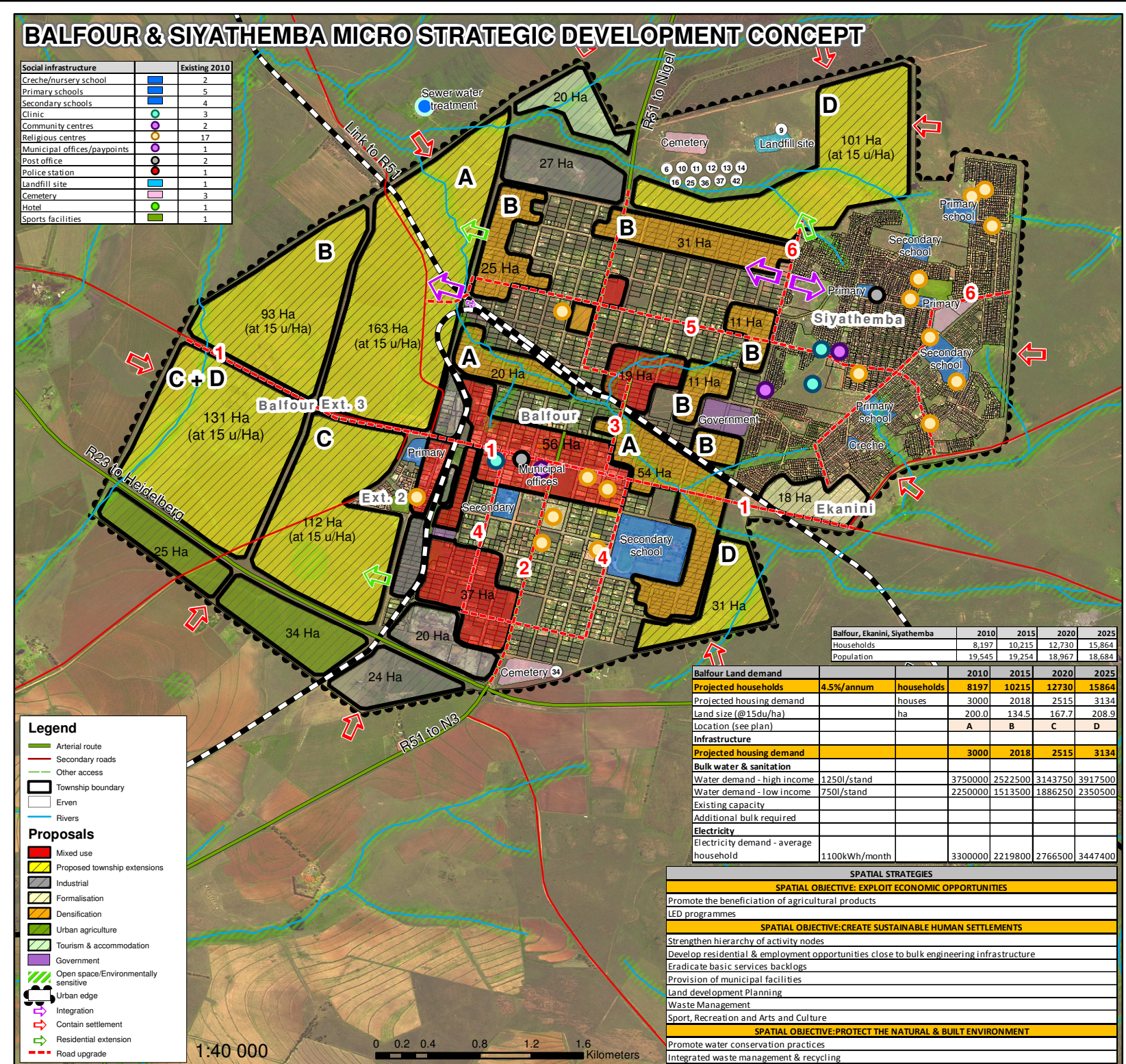
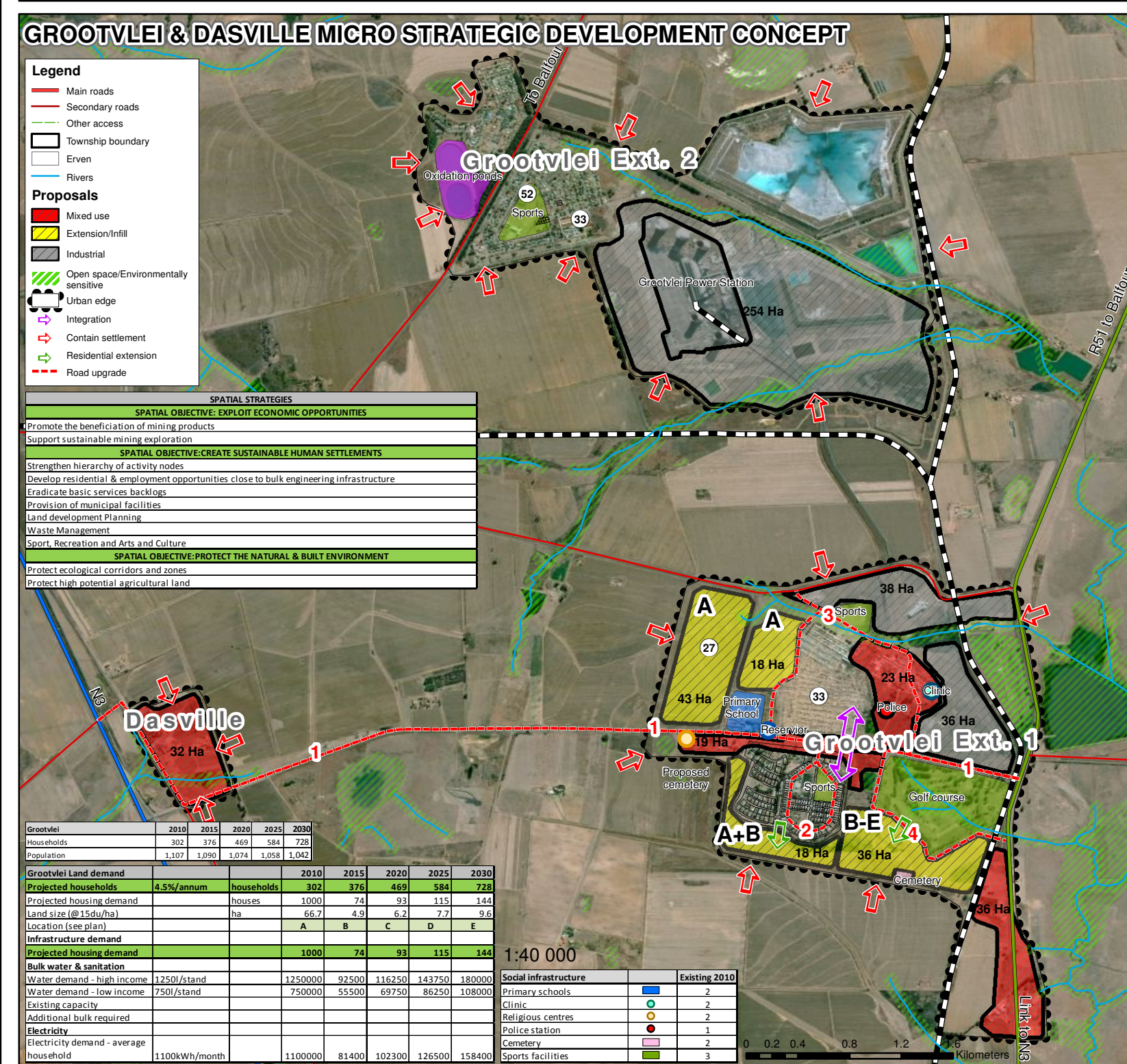
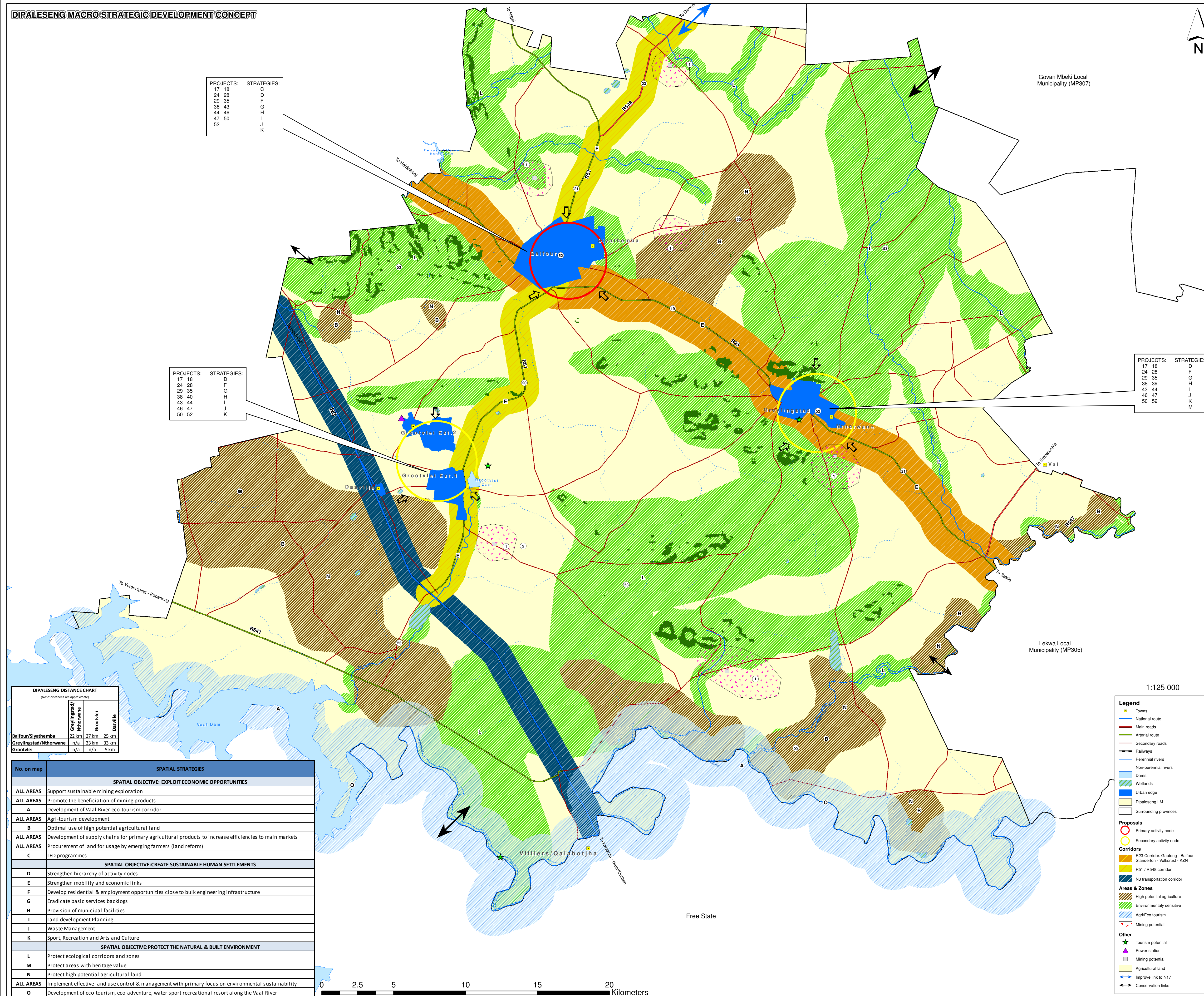




PLAN 44: DIPALESENG MUNICIPALITY SPATIAL DEVELOPMENT FRAMEWORK MAPS

DIPALESENG MACRO STRATEGIC DEVELOPMENT CONCEPT



DIPALESENG MUNICIPALITY CAPITAL EXPENDITURE FRAMEWORK														
Spatial Strategies	Project No.	Projects	Locality	Priority	Est. amount (R M)	Funding Source	Implementation Priority					Planning Agency	Implementation Agency	Relevant Sector Plan
							2011	2012	2013	2014	2015			
SPATIAL OBJECTIVE: EXPLOIT ECONOMIC OPPORTUNITIES														
Support sustainable mining exploration	1	Compilation of an implementation plan to create mining enabling environment	Dipaleseng	2	0.5	Multi-sector	0.25	0.25				Department of Mineral Resources	Department of Minerals Resources	Local Economic Development Strategy
Promote the beneficiation of mining products	2	Feasibility study on the beneficiation of coal	Dipaleseng	2	1.5	Multi-sector	0.75	0.75				Department of Trade and Industry & Department of Economic Development	Department of Trade and Industry & Department of Economic Development	Local Economic Development Strategy
Development of Vaal River eco-tourism corridor	3	Development of a Tourism Strategy	Dipaleseng	1	0.5	Multi-sector	0.25	0.25				Department of Tourism and Department of Environmental Affairs and GSDM	GSDM and DUM	Tourism Plan/Strategy
Agri-tourism development														
Optimal use of high potential agricultural land	4	Access suitable land for irrigation farming and beneficiation of agricultural products	Dipaleseng	2	4	Multi-sector	2	2				Department of Rural Development and Land Reform and Department of Agriculture	Department of Rural Development and Land Reform and Department of Agriculture	Local Economic Development Strategy
Development of supply chains for primary agricultural products to increase efficiencies to main markets	5	Access agricultural support programmes for the development of arable land	Dipaleseng	2	8	Multi-sector	4	4				Department of Trade and Industry & Department of Economic Development and Department of Agriculture	Department of Agriculture	Local Economic Development Strategy
Promote the beneficiation of agricultural products	6	Create feedlots at Balfour	Balfour	2	5	Multi-sector		2.5	2.5			Department of Agriculture, Rural Development and Land Administration	Department of Agriculture, Department of Rural Development and Land Reform	Local Economic Development Strategy
	7	Beneficiation of agricultural products	Dipaleseng	3	1.5	Multi-sector				1	0.5	Department of Agriculture, Rural Development and Land Administration	Department of Agriculture, Department of Rural Development and Land Reform	Local Economic Development Strategy
Procurement of land for usage by emerging farmers (land reform)	8	Implement land reform Programme	Dipaleseng	2	1	National	0.5	0.5				Department of Rural Development and Land Reform	Department of Rural Development and Land Reform	Department of Rural Development and Land Reform
LED Programmes	9	Waste Management Project Burnstone	Balfour	3	1.5	Multi-sector		0.75	0.75			GSDM and DUM	GSDM and DUM	Local Economic Development Strategy
	10	Establish Local Radio Station	Balfour	3	1	GSDM				1		GSDM and DUM	GSDM and DUM	Local Economic Development Strategy
	11	Establish Brick Plant	Balfour	3	0.3	DUM			0.3			GSDM and DUM	GSDM and DUM	Local Economic Development Strategy
	12	Car wash facility	Balfour	3	0.06	DUM	0.06					GSDM and DUM	GSDM and DUM	Local Economic Development Strategy
	13	Sewing and Mending Projects	Balfour	3	0.05	DOS	0.05					GSDM and DUM	GSDM and DUM	Local Economic Development Strategy
	14	Youth Development Programmes	Balfour	2	0.1	DUM	0.1					GSDM and DUM	GSDM and DUM	Local Economic Development Strategy
	15	SMME/BEE Development Programmes	Dipaleseng	2	0.05	DOS	0.05					GSDM and DUM	GSDM and DUM	Local Economic Development Strategy
Spatial Strategies	Project No	Projects	Locality	Priority	Estimated amount (R M)	Funding Source	Implementation Priority					Planning Agency	Implementation Agency	Relevant Sector Plan
SPATIAL OBJECTIVE: CREATE SUSTAINABLE HUMAN SETTLEMENTS														
Strengthen hierarchy of activity nodes	16	Urban regeneration policy for Balfour as primary activity node	Balfour	2	1	MIG		1				GSDM and DUM	GSDM and DUM	Spatial Development Framework
	17	Thusing service centres.	Dipaleseng	3	9	MIG			3	3	3	Department of Public Service and Administration	Department of Public Service and Administration and Department of Public Works	Local Economic Development Strategy
	18	Draft detailed Urban Design Framework for nodes	Dipaleseng	2	3	DISA			1	1	1	GSDM and DUM	GSDM and DUM	District Integrated Transport Plan
Strengthen mobility and economic links	19	Upgrade of the R23 road between Greylingstad and Balfour	Dipaleseng	2	28	Department of Public Works, Roads and Transport	14	14				Department of Transport	Department of Roads and Transport	District Integrated Transport Plan
	20	Upgrade of the R51 road between Balfour and Groenlief	Dipaleseng	2	34	Department of Public Works, Roads and Transport	17	17				GSDM and DUM	GSDM and DUM and Department of Roads and Transport	District Integrated Transport Plan
	21	Maintain R23 transport corridor to the east of Greylingstad and to the north of Balfour	Dipaleseng	2	10	Department of Public Works, Roads and Transport	5	5				GSDM and DUM	GSDM and DUM and Department of Roads and Transport	District Integrated Transport Plan
	22	Upgrade gravel access roads to schools to enable public transport provision	Dipaleseng	3	15	Department of Public Works, Roads and Transport			5	5	5	Provincial Department of Roads and Transport/ District Municipality	Provincial Department of Roads and Transport/ District Municipality	District Integrated Transport Plan
	23	Maintain R51-R548 main road south of Groenlief (to Vaal River) and north of Balfour (to Deon, Secunda)	Dipaleseng	2	17	Department of Public Works, Roads and Transport			7	5	5	Provincial Department of Roads and Transport/ District Municipality	Provincial Department of Roads and Transport/ District Municipality	District Integrated Transport Plan
Develop residential & employment opportunities close to bulk engineering infrastructure	24	Develop service master plans (roads, water, sewer, electricity for Balfour, Greylingstad and Groenlief)	Dipaleseng	3	2.5	MIG/COGTA		2.5				GSDM and DUM	GSDM and DUM	Comprehensive Infrastructure Plan
	25	Subsidised housing project Balfour 3000 houses	Balfour	1	150	Department of Human Settlements	50	50	25	20	5	Department of Human Settlements	Department of Human Settlements	Housing Plan
	26	Subsidised housing project Greylingstad 1000 houses	Greylingstad	1	50	Department of Human Settlements	10	10	10	10	10	Department of Human Settlements	Department of Human Settlements	Housing Plan
	27	Subsidised housing project Groenlief 1000 houses	Groenlief	1	50	Department of Human Settlements	10	10	10	10	10	Department of Human Settlements	Department of Human Settlements	Housing Plan
	28	Identification of new cemetery and land fill sites in all main towns	Dipaleseng	1	3	DUM	3					GSDM and DUM	DUM	Comprehensive Infrastructure Plan
Eradicate basic services backlogs	29	Upgrade Main Substations (Bulk Electricity supply)	Dipaleseng	1	15	Eskom, MIG	5	5	5			Eskom and DUM	Eskom and DUM	Comprehensive Infrastructure Plan
	30	Rural Water Supply (15 boreholes)	Dipaleseng	1	2	GSDM	1	1				Department of Water Affairs, Department of Public Works and GSDM	Department of Public Works and GSDM, DUM	Water Services development Plan
	31	New WTP for Greylingstad	Greylingstad	2	30	GSDM	10	10	10	10		GSDM and DUM	GSDM and DUM	Water Services development Plan
	32	Provision of VIP's	Dipaleseng	2	3	GSDM	1	1	1			GSDM and DUM	GSDM and DUM	Water Services development Plan
	33	Provision of Sewer Network	Groenlief & Greylingstad	1	5	DUM	2.5	2.5				GSDM and DUM	GSDM and DUM	Comprehensive Infrastructure Plan
	34	Extension of Graveyard in Balfour	Balfour	2	2	DUM		2				GSDM and DUM	GSDM and DUM	Comprehensive Infrastructure Plan
	35	Develop Storm Water Master Plan	Dipaleseng	2	0.7	GSDM	0.7					GSDM and DUM	GSDM and DUM	Comprehensive Infrastructure Plan
	36	Reticalation Upgrade Water Network	Balfour Ward 3	1	5	GSDM	2.5	2.5				GSDM and DUM	GSDM and DUM	Water Services development Plan
	37	Sewer Reticalation Phase 3	Balfour Ward 3	1	5	GSDM	2.5	2.5				GSDM and DUM	GSDM and DUM	Water Services development Plan
	38	Sewer Reticalation & Maintenance	Dipaleseng	2	TBD	GSDM	—	—	—			GSDM and DUM	GSDM and DUM	Water Services development Plan
	39	Sewer Reticalation 700 kN Ext. 1	Dipaleseng	1	10.5	GSDM	5	5	0.5			GSDM and DUM	GSDM and DUM	Water Services development Plan
	40	Sewer Reticalation Ext. 1	Dipaleseng	1	TBD	GSDM	—	—	—			GSDM and DUM	GSDM and DUM	Water Services development Plan
	41	Extend Sewer Plant Capacity	Balfour Ward 03	1	TBD	GSDM	—	—	—			GSDM and DUM	GSDM and DUM	Water Services development Plan
	42	Extend street lighting to major routes	Balfour Ward 03	2	TBD	GSDM	—	—	—			GSDM and DUM	GSDM and DUM	Comprehensive Infrastructure Plan
	43	Massive Electrification of Households	Dipaleseng	1	TBD	GSDM	—	—	—			GSDM and DUM	GSDM and DUM	Comprehensive Infrastructure Plan
	44	Provision of High Mast and Street Lights	Dipaleseng	2	2.1	GSDM	0.7	0.7	0.7			GSDM and DUM	GSDM and DUM	Comprehensive Infrastructure Plan
	45	Electricity Reticalation 700 kN Ext. 1	Nthorwane Ward 5	1	3	GSDM	1.5	1.5				GSDM and DUM	GSDM and DUM	Comprehensive Infrastructure Plan
	46	Upgrade Electrical Network	Dipaleseng	1	0.25	DUM	0.25					DUM	DUM	Comprehensive Infrastructure Plan
	Provision of Municipal Facilities	47	Upgrade Phase 2 Sports Complex	Ward 1 and 5	2	1	GSDM/MIG		1				GSDM and DUM	GSDM and DUM
48		Development Planning Capacity	Dipaleseng	1	1	GSDM	1					GSDM and DUM	GSDM and DUM	Comprehensive Infrastructure Plan
Land Development Planning	49	Re-survey	Dipaleseng	1	0.05	GSDM	0.05					GSDM and DUM	GSDM and DUM	Comprehensive Infrastructure Plan
Waste Management	50	Identify and Develop Waste Disposal Site	Dipaleseng	2	0.5	GSDM	0.5					GSDM and DUM	GSDM and DUM	Comprehensive Infrastructure Plan
Sports, Recreation and Arts and Culture	51	Identify/Develop Regional Multi Purpose recreational Centre	Dipaleseng	2	1	DUM			0.5	0.5		GSDM and DUM	GSDM and DUM	Comprehensive Infrastructure Plan
HIV/AIDS	52	Multiple purpose Centre for hospice, Orphanage home and old age home	Dipaleseng	2	3	DUM		1.5	1.5			GSDM and DUM	GSDM and DUM	Comprehensive Infrastructure Plan
Spatial Strategies	Project No	Projects	Locality	Priority	Estimated amount (R M)	Funding Source	Implementation Priority					Planning Agency	Implementation Agency	Relevant Sector Plan
SPATIAL OBJECTIVE: PROTECT THE NATURAL & BUILT ENVIRONMENT														
Protect ecological corridors and zones	53	Formulate land use management guidelines for Conservation zone	Dipaleseng	3	0.5	National		0.25	0.25			Department of Environmental Affairs, GSDM and DUM	GSDM and DUM	Integrated Environmental Implementation Plan
Protect areas with heritage value	54	Establish the Anglo Boer War fields and historic graves as tourist destinations	Dipaleseng	3	0.5	National		0.5				Department of Environmental Affairs, GSDM and DUM	GSDM and DUM	Integrated Environmental Implementation Plan
Protect high potential agricultural land	55	Formulate land use management guidelines for high value agricultural land	Dipaleseng	3	0.3	National	0.15	0.15				Department of Agriculture, GSDM and DUM	GSDM and DUM	Integrated Environmental Implementation Plan
Implement effective land use control & management with primary focus on environmental sustainability	56	Development of a "green policy" for municipality on use of renewable energy, recycling and water saving measures	Dipaleseng	3	0.25	National			0.25			Department of Environmental Affairs, GSDM, DUM	GSDM and DUM	Integrated Environmental Implementation Plan
Development of eco-tourism, eco-adventure, water sport recreational resort along the Vaal River	57	Resort Development and tourism infrastructure development	Dipaleseng	2	10	Public-Private Partnership				5	5	Department of Tourism and Department of Trade and Industry	Department of Tourism and Department of Trade and Industry	Local Economic Development
Environmental Awareness Programme	58	Formulate Environmental Awareness Programme to educate communities on environmental conservation	Dipaleseng	3	2	Multi-sector	1	0.4	0.4	0.4	0.4	Department of Environmental Affairs, GSDM and DUM	Department of Environmental Affairs, GSDM and DUM	Tourism Plan/Strategy
TOTALS					501.89	145.26	162.25	90.15	64.85	39.9				